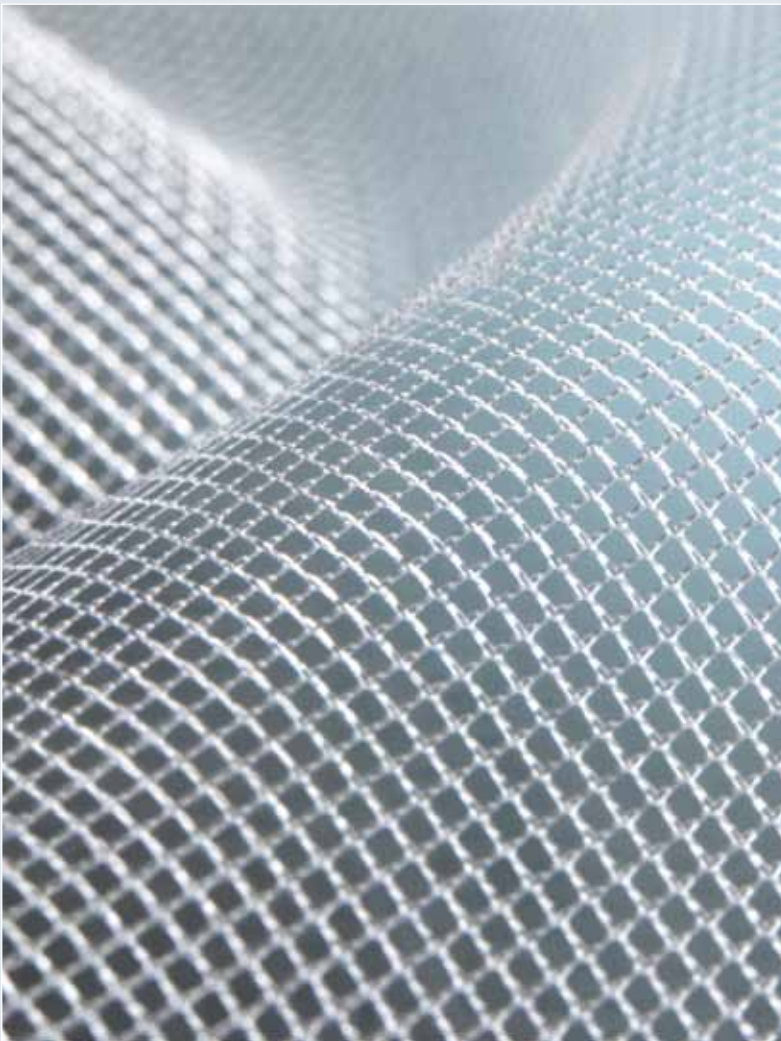

Titanized Mesh Implants Plastic Surgery

The titanized mesh implants from pfm medical distinguish themselves with a minimum in inflammation rates and a minimum in shrinkage as they are 100% biocompatible, especially light and hydrophilic.

www.pfmmedical.com



Titanized mesh implants such as TiLOOP® Bra from pfm medical are made of a unique patented composite material with a covalent bonded titanium surface. Their areas of use include operative plastic-reconstructive surgery.

Benefits

Excellent biocompatibility

- ▶ Ultra soft mesh configuration
- ▶ Excellent ingrowth
- ▶ Minimum inflammation rates

Perfect handling

Due to its softness and hydrophilic characteristics TiLOOP® Bra offers excellent aesthetic results to the modern plastic surgeon.

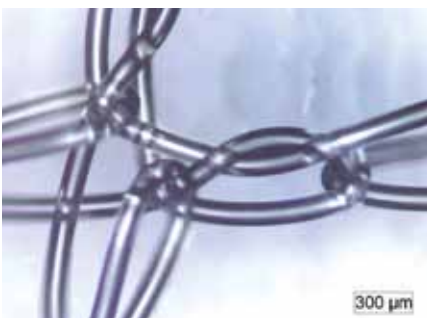
Excellent quality of life

- ▶ Breast tissue stays soft
- ▶ Women keep their natural breast feeling
- ▶ Good looking aesthetic outcome

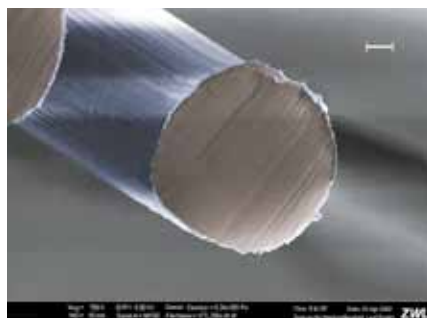
Globally unique technology

The patented nano-technological manufacturing process to form a covalent bond between the titanium oxide surface and the polypropylene is globally unique.

Knowledge



TiLOOP®, REM monofilament suture



TiLOOP® cut: monofilament suture, REM



Laser cut for round suture ends

Mesh configurations

16 g/m², 35 g/m²

Pore sizes

Larger than 1 mm

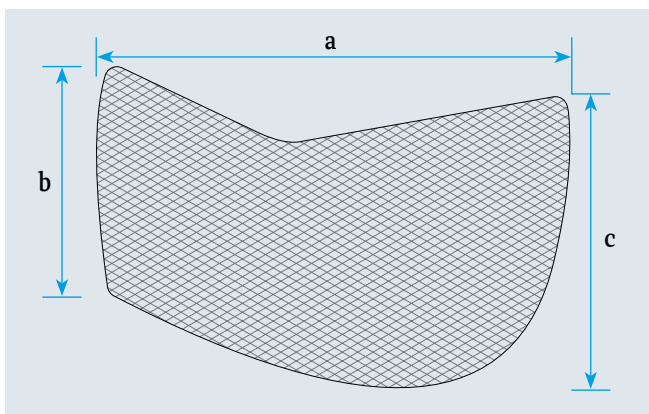
TiLOOP® Bra

TiLOOP® Bra is used during reconstructive and plastic mamma surgery serves to fix the Pectoralis Major. TiLOOP® Bra is covering and securing the position of the breast implants. The TiLOOP® Bra retains the patient's natural breast feeling and it also not palpable or noticeable after surgery (the TiLOOP® Bra is not a tissue replacement). Imaging systems are also not affected by the TiLOOP® Bra.

Indication

- ▶ Skin-sparing mastectomy or subcutaneous mastectomy with a retention of the nipple-areola complex
- ▶ Mastopexy
- ▶ Immediate breast reconstruction
- ▶ Delayed breast reconstruction
- ▶ Change of implant

Dimensions of TiLOOP® Bra



Size	a x b x c (cm)
small	19.5 x 9.5 x 12
medium	21.5 x 11.5 x 14
large	23.5 x 13.5 x 16

Order information

TiLOOP® Bra

Size	Length x Width (cm)	Weight	REF
Small	19.5 x 12	16 g/m ²	6000636
		35 g/m ²	6000639
Medium	21.5 x 14	16 g/m ²	6000637
		35 g/m ²	6000640
Large	23.5 x 16	16 g/m ²	6000638
		35 g/m ²	6000641

Contact

**Do you have any questions?
Our Customer Solutions Team would be pleased
to advise you.**

service@pfmmedical.com

T +49 (0)2236 9641-220

F +49 (0)2236 9641-99 50

www.pfmmedical.com - Your source of information for pfm medical ag products

pfmmedical

pfm medical ag
Wankelstraße 60
50996 Köln, Germany

Certified according to
DIN EN ISO 13485

Products are subject
to alterations