

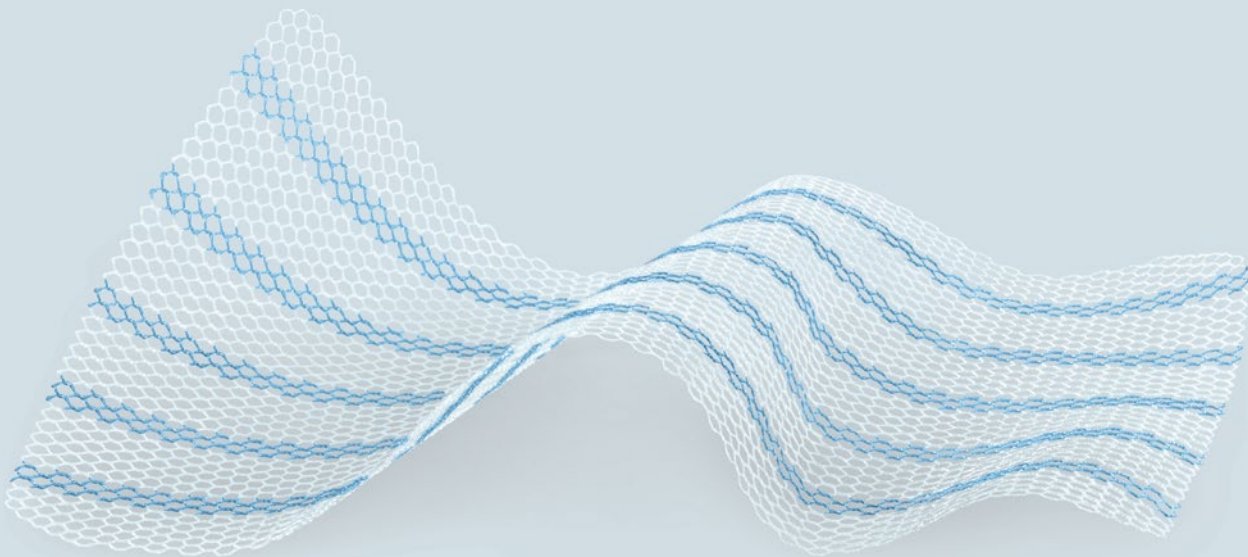
---

**Titanized  
Mesh Implants  
Hernia Surgery**

---

The titanized mesh implants from pfm medical distinguish themselves with a minimum in inflammation rates and a minimum in shrinkage as they are 100% biocompatible, especially light and hydrophilic.

[www.pfmmedical.com](http://www.pfmmedical.com)



**Titanized mesh implants** from pfm medical are made of a unique patented composite material for the conducting of surgery on all types of hernia with application of all surgical techniques including IPOM.

### Benefits

#### Excellent biocompatibility

- ▶ Ultra light mesh configuration
- ▶ Lowest chronic post operational pain
- ▶ Minimum of inflammation rates
- ▶ Minimum shrinkage

#### Perfect handling

Due to its hydrophilic characteristic the titanized mesh can be easily placed intrabdominal.

#### Your personal customized product

pfm medical is offering you to create your own, personalized titanized mesh.

#### Excellent quality of life

The excellent biocompatibility ensures an absolute minimum when it comes to inflammation rates and a short convalescence time.

#### Globally unique technology

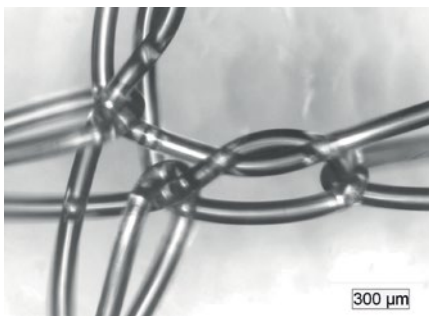
The patented nano-technological manufacturing process to form a covalent bond between the titanium oxide surface and the polypropylene is globally unique.

### Indication

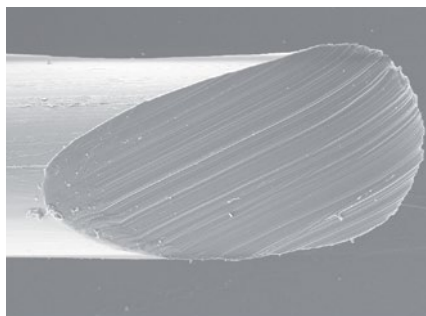
#### One for all

The TiMESH®, TiSURE® and TiLENE® range has been designed for universal use for the treatment of all intraperitoneal and extraperitoneal hernias.

### Knowledge



TiMESH®, REM monofilament suture



TiMESH® cut: monofilament suture, REM



Laser cut for round suture ends

#### Mesh configurations

16 g/m<sup>2</sup>, 24 g/m<sup>2</sup>, 35 g/m<sup>2</sup>, 65 g/m<sup>2</sup>


#### Pore sizes

Larger than 1 mm

**TiMESH®**

For intra- and extraperitoneal hernia repair.

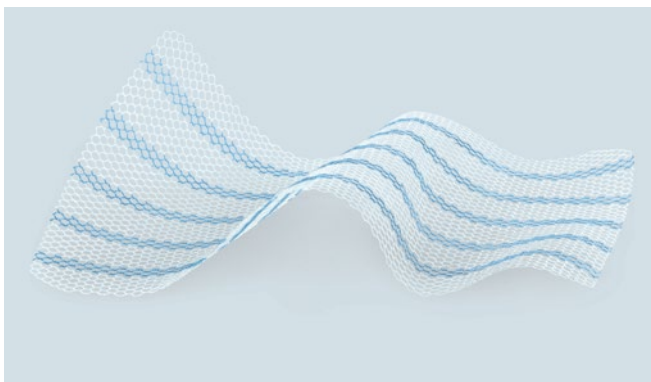
**Order information**

Indication	Product name	Mesh blank	Size (L x W/cm)	Weight	REF
All types of hernia including IPOM	TiMESH®		10 x 15	16 g/m <sup>2</sup>	6000004
				35 g/m <sup>2</sup>	6000001
				65 g/m <sup>2</sup>	6000470
			15 x 15	16 g/m <sup>2</sup>	6000029
				35 g/m <sup>2</sup>	6000030
				65 g/m <sup>2</sup>	6000471
			20 x 15	35 g/m <sup>2</sup>	6000016
				65 g/m <sup>2</sup>	6000425
			30 x 30	35 g/m <sup>2</sup>	6000073
				65 g/m <sup>2</sup>	6000426

**TiLENE® Blue**

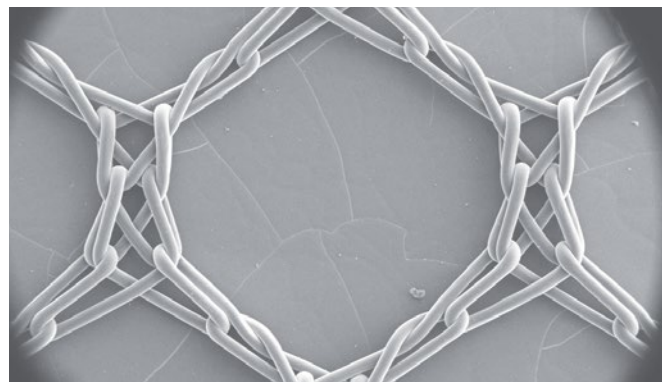
The blue orientation stripes facilitate the vertical alignment of the mesh during surgery. TiLENE® Blue mesh implants offer outstanding tissue integration.

**View**




TiLENE® Blue

**Detail**



Hexagonal 3 mm pore



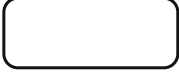

**Order information**

Indication	Product name	Mesh blank	Size (L x W/cm)	Weight	REF
All types of hernia including IPOM	TiLENE® Blue		10 x 15	24 g/m <sup>2</sup>	6000950
			15 x 15	24 g/m <sup>2</sup>	6000951
			20 x 15	24 g/m <sup>2</sup>	6000952
			30 x 30	24 g/m <sup>2</sup>	6000953

**TiLENE<sup>®</sup>, TiLENE<sup>®</sup> Luisenhospital, TiLENE<sup>®</sup> Austria**

For intra- and extraperitoneal hernia repair.

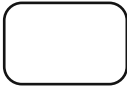







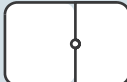
**Order information**

Indication	Product name	Mesh blank	Size (L x W/cm)	Weight	REF
TAPP/TEP/ IPOM	TiLENE <sup>®</sup>		12 x 17	35 g/m <sup>2</sup>	6000900
	TiLENE <sup>®</sup> »Luisenhospital 20 x 10«		20 x 10	35 g/m <sup>2</sup>	6000717
	TiLENE <sup>®</sup> »Luisenhospital 25 x 10«		25 x 10	35 g/m <sup>2</sup>	6000718
	TiLENE <sup>®</sup> »Austria«		25 x 20	35 g/m <sup>2</sup>	6000744

**TiLENE®**

For inguinal hernia repair.

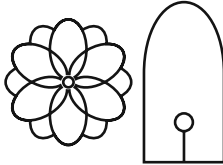
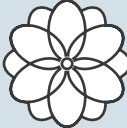
**Order information**

Indication	Product name	Mesh blank	Size (L x W/cm)	Weight	REF
Inguinal hernias	TiLENE®		6 x 9	35 g/m <sup>2</sup>	6000683
			6 x 11	35 g/m <sup>2</sup>	6000682
	TiLENE® »Dr. Neufang right«		15 x 12	35 g/m <sup>2</sup>	6000643
	TiLENE® »Dr. Neufang left«		15 x 12	35 g/m <sup>2</sup>	6000644
	TiLENE® »LAP«		15 x 13	35 g/m <sup>2</sup>	6000707
	TiLENE® »Cologne«		4.1 x 10	65 g/m <sup>2</sup>	6000648
	TiLENE® »Dr. R. Schmidt«		15 x 10	35 g/m <sup>2</sup>	6000706
	TiLENE® »Lich«		15 x 10	35 g/m <sup>2</sup>	6000693
	TiLENE® »Dr. Nussbaumer«		15 x 10	35 g/m <sup>2</sup>	6000713

## TiLENE® Plug Set/TiLENE® Plug

For inguinal hernia repair.

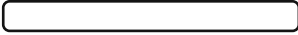
### Order information

Indication	Product name	Mesh blank	Size (L x W/cm)	Weight	REF
Inguinal hernias	TiLENE® Plug Set		Small (Ø 5)	35 g/m <sup>2</sup>	6000610
				65 g/m <sup>2</sup>	6000613
			Medium (Ø 7)	35 g/m <sup>2</sup>	6000611
				65 g/m <sup>2</sup>	6000614
			Large (Ø 9)	35 g/m <sup>2</sup>	6000612
				65 g/m <sup>2</sup>	6000615
TiLENE® Plug		Small (Ø 5)	35/65 g/m <sup>2</sup>	6000529	
		Medium (Ø 7)	35/65 g/m <sup>2</sup>	6000530	
		Large (Ø 9)	35/65 g/m <sup>2</sup>	6000531	

## TiLENE Strip®

For prevention of incisional hernias, soft tissue reinforcement and rectopexy.

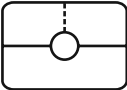


### Order information

Indication	Product name	Mesh blank	Size (L x W/cm)	Weight	REF
Soft tissue reinforcement and rectopexy	TiLENE® Strip		4 x 40	35 g/m <sup>2</sup>	6000532
				65 g/m <sup>2</sup>	6000533
			6 x 40	35 g/m <sup>2</sup>	6000534
				65 g/m <sup>2</sup>	6000535
			8 x 40	35 g/m <sup>2</sup>	6000536
				65 g/m <sup>2</sup>	6000537
10 x 40	35 g/m <sup>2</sup>	6000538			
	65 g/m <sup>2</sup>	6000539			

**TiSURE<sup>®</sup>, TiLENE<sup>®</sup> »Hiatus I«, TiLENE<sup>®</sup> »Dr. Schulz«**

For hiatal hernia repair.

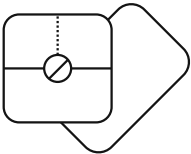
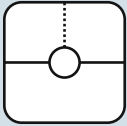
**Order information**

Indication	Product name	Mesh blank	Size (L x W/cm)	Weight	REF
Hiatal hernias	TiSURE <sup>®</sup>		7 x 10	35 g/m <sup>2</sup>	6000438
				65 g/m <sup>2</sup>	6000440
	TiLENE <sup>®</sup> »Hiatus I«		4.5 x 3.5	35 g/m <sup>2</sup>	6000684
	TiLENE <sup>®</sup> »Dr. Schulz«		6 x 3.5	35 g/m <sup>2</sup>	6000694

**TiLENE<sup>®</sup> Guard Set, TiLENE<sup>®</sup> Guard**

For parastomal hernia repair.

**Order information**

Indication	Product name	Mesh blank	Size (L x W/cm)	Weight	REF
Parastomal hernias	TiLENE <sup>®</sup> Guard Set		14 x 14	35 g/m <sup>2</sup>	6000525
			20 x 14	35 g/m <sup>2</sup>	6000527
	TiLENE <sup>®</sup> Guard		14 x 14	35 g/m <sup>2</sup>	6000605
			20 x 14	35 g/m <sup>2</sup>	6000607
				35/65 g/m <sup>2</sup>	6000528

**Contact**

**Do you have any questions?  
Our Customer Solutions Team would be pleased  
to advise you.**

service@pfmmedical.com  
T +49 (0)2236 9641-220  
F +49 (0)2236 9641-99 50

[www.pfmmedical.com](http://www.pfmmedical.com) - Your source of information for pfm medical ag products

**pfm**medical

pfm medical ag  
Wankelstraße 60  
50996 Köln, Germany

Certified according to  
DIN EN ISO 13485

Products are subject  
to alterations